

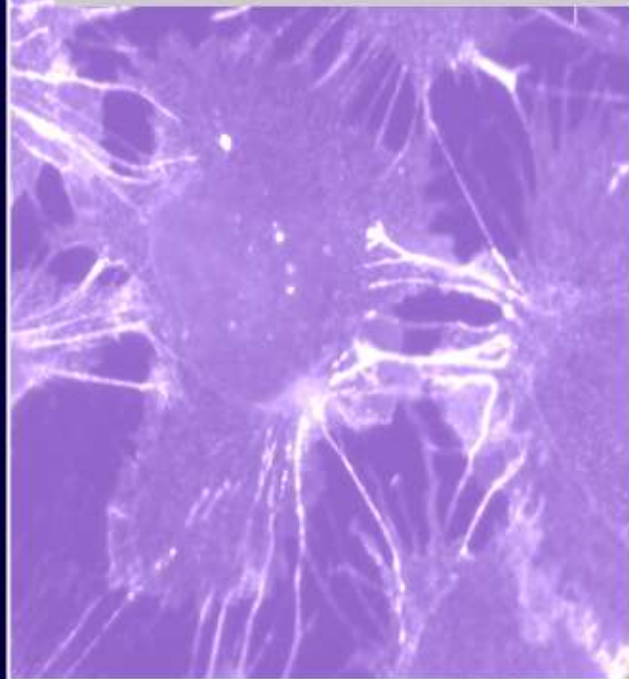
ATCCTM

*American Type Culture Collection
10801 University Blvd
Manassas, VA 20110*

Thawing, Propagating, and Cryopreserving Protocol

**NCI-PBCF-HTB26 (MDA-MB-231)
Breast Adenocarcinoma
(ATCC[®]HTB-26TM)**

March 1, 2012; Version 1.5



PBCF

*Physical Sciences-Oncology Center Network
Bioresource Core Facility*



**PS-OC —
Bioresource Core
Facility**

Table of Contents

1. BACKGROUND INFORMATION ON MDA-MB-231 CELL LINE	3
2. GENERAL INFORMATION FOR THE THAWING, PROPAGATING AND CRYOPRESERVING OF NCI-PBCF- HTB26 (MDA-MB-231)	3
3. REAGENTS.....	5
A. PREPARATION OF COMPLETE GROWTH MEDIUM (L-15 + 10 % (v/v) FBS)	5
4. THAWING AND PROPAGATION OF CELLS.....	6
A. THAWING CELLS.....	6
B. PROPAGATING CELLS	7
C. SUBCULTURING CELLS.....	8
5. HARVESTING OF CELLS FOR CRYOPRESERVATION.....	9
6. CRYOPRESERVATION OF CELLS.....	10
A. CRYOPRESERVATION USING A RATE-CONTROLLED PROGRAMMABLE FREEZER	11
<i>i. Using the Cryomed</i>	11
B. CRYOPRESERVATION USING “MR. FROSTY”	12
7. STORAGE	13
APPENDIX 1: PHOTOMICROGRAPHS OF NCI-PBCF-HTB26 (MDA-MB-231).....	14
APPENDIX 2: GROWTH PROFILE OF NCI-PBCF-HTB26 (MDA-MB-231)	16
APPENDIX 3: CYTOGENETIC ANALYSIS OF NCI-PBCF-HTB26 (MDA-MB-231) CELLS	17
APPENDIX 4: GLOSSARY OF TERMS	20
APPENDIX 5: REFERENCE.....	21
APPENDIX 6: REAGENT LOT TRACEABILITY AND CELL EXPANSION TABLES	23
APPENDIX 7: CALCULATION OF POPULATION DOUBLING LEVEL (PDL)	25
APPENDIX 8: SAFETY PRECAUTIONS	25

Protocol for Thawing, Propagation and Cryopreservation of NCI-PBCF-HTB26 (MDA-MB-231) (ATCC[®]HTB-26[™]) Breast adenocarcinoma

1. Background Information on MDA-MB-231 cell line

Designations:	MDA-MB-231	
Biosafety Level:	1	
Shipped:	Frozen (in dry ice)	
Growth Properties:	Adherent (see appendix 1)	
Organism:	<i>Homo sapiens</i>	
Source:	Organ	Mammary gland; breast
	Disease	Adenocarcinoma
	Derived from metastatic site:	Pleural effusion

For more information visit the ATCC webpage:

<http://www.atcc.org/ATCCAdvancedCatalogSearch/ProductDetails/tabid/452/Default.aspx?ATCCNum=HTB-26&Template=cellBiology>

2. General Information for the thawing, propagating and cryopreserving of NCI-PBCF- HTB26 (MDA-MB-231)

Culture Initiation	<ul style="list-style-type: none"> The cryoprotectant (DMSO) should be removed by centrifugation. The seeding density to use with a vial of MDA-MB-231 cells is or about 5×10^4 viable cells/cm² or one vial into a T-75 flask containing with 15 mL complete growth medium (L-15+10 % (v/v) FBS).
Complete growth medium	<ul style="list-style-type: none"> The complete growth medium used to expand MDA-MB-231 cells is L-15 + 10 % (v/v) FBS. Note: The MDA-MB-231 cells were grown in complete growth medium, L-15 + 10 % (v/v) FBS at ATCC. Reviewer from the PS-OC highly recommends the complete growth medium, DMEM (HG) + 10 % (v/v) FBS. Complete growth medium (L-15 + 10 % (v/v) FBS) should be pre-warmed before use by placing into a water bath set at 35 °C to 37 °C for 15 min to 30 min. After 30 min, the complete growth medium (L-15 + 10 % (v/v) FBS) should be moved to room temperature until used. Complete growth medium (L-15 + 10 % (v/v) FBS) should be stored at 2 °C to 8 °C when not in use.
Cell Growth	<ul style="list-style-type: none"> The growth temperature for MDA-MB-231 is 37 °C ± 1 °C. 100 % air atmosphere (without CO₂) is recommended.

SOP: Thawing, Propagation and Cryopreservation of NCI-PBCF-HTB26
(MDA-MB-231)

Growth Properties	<ul style="list-style-type: none"> Population doubling time (PDT) is approximately 38 h.
Special Growth Requirements	<ul style="list-style-type: none"> Subculture MDA-MB-231 cells at 80 % to 90 % confluence or when cell density reaches an average of 2×10^5 cells/cm².
Subculture Medium	<ul style="list-style-type: none"> 0.25 % (w/v) trypsin-0.53 mM EDTA (ATCC cat no. 30-2101). Subculturing reagents should be pre-warmed before use by placing into a water bath set at 35 °C to 37 °C for 15 min to 30 min. After 30 min, the subculturing medium should be moved to room temperature until used. Subculturing reagents should be stored at 2 °C to 8 °C when not in use.
Subculture Method	<ul style="list-style-type: none"> The attached MDA-MB-231 cells are subcultured using 0.25 % (w/v) trypsin-0.53 mM EDTA (ATCC cat no. 30-2101). The enzymatic action of the trypsin-EDTA is stopped by adding complete growth medium to the detached cells. A split ratio of 1:4 to 1:5 or a seeding density of 4×10^4 to 5×10^4 viable cells/cm² is used when subculturing MDA-MB-231 cells.
Viable Cells/mL/Cryovial	<ul style="list-style-type: none"> The target number of viable cells/mL/cryovial is: 2.0×10^6 (acceptable range: 1.5×10^6 viable cells/mL to 3×10^6 viable cells/mL).
Cryopreservation Medium	<ul style="list-style-type: none"> The cryopreservation medium for MDA-MB-231 cells is complete growth medium (L-15 + 10 % (v/v) FBS) containing 5 % (v/v) DMSO (ATCC cat no. 4-X).

General Procedure to be applied throughout the SOP

Aseptic Technique	<ul style="list-style-type: none"> Use of good aseptic technique is critical. Any materials that are contaminated, as well as any materials with which they may have come into contact, must be disposed of immediately.
Traceability of material/reagents	<ul style="list-style-type: none"> Record the manufacturer, catalog number, lot number, date received, date expired and any other pertinent information for all materials and reagents used. Record information in the Reagent Lot Traceability Table 4 (Appendix 6).
Expansion of cell line	<ul style="list-style-type: none"> Record the subculture and growth expansion activities, such as passage number, % confluence, % viability, cell morphology (see Figures 1 & 2, Appendix 1) and population doubling levels (PDLs), in the table for Cell Expansion (Table 5, Appendix 6). Calculate PDLs using the equation in Appendix 7.
Medium volumes	<ul style="list-style-type: none"> Medium volumes are based on the flask size as outlined in Table 1.
Glossary of Terms	<ul style="list-style-type: none"> Refer to Glossary of Terms used throughout the document (see Appendix 4)
Safety Precaution	<ul style="list-style-type: none"> Refer to Safety Precautions pertaining to the thawing, propagating and cryopreserving of MDA-MB-231 (see Appendix 8).

Table 1: Medium Volumes

Flask Size	Medium Volume Range
12.5 cm ² (T-12.5)	3 mL to 6 mL
25 cm ² (T-25)	5 mL to 13 mL
75 cm ² (T-75)	10 mL to 38 mL
150 cm ² (T-150)	30 mL to 75 mL
175 cm ² (T-175)	35 mL to 88 mL
225 cm ² (T-225)	45 mL to 113 mL

3. Reagents

Follow Product Information Sheet storage and/or thawing instructions. Below is a list of reagents for the propagation, subcultivation and cryopreservation of MDA-MB-231 cells.

Table 2: Reagents for Expanding, Subculturing and Cryopreserving of MDA-MB-231 cells

Complete growth medium reagents	Subculturing reagents	Cryopreservation medium reagents
Leibovitz's L-15 Medium (ATCC cat no. 30-2008)	Trypsin-EDTA (0.25 % (w/v) Trypsin/0.53 mM EDTA) (ATCC cat no. 30-2101)	Leibovitz's L-15 Medium (ATCC cat no. 30-2008)
10 % (v/v) Fetal Bovine Serum (FBS) (ATCC cat no. 30-2020)	Dulbecco's Phosphate Buffered Saline (DPBS); modified without calcium chloride and without magnesium chloride (ATCC cat no. 30-2200)	10 % (v/v) FBS (ATCC cat no. 30-2020)
		5 % (v/v) Dimethyl Sulfoxide (DMSO) (ATCC cat no. 4-X)

a. Preparation of complete growth medium (L-15 + 10 % (v/v) FBS)

The complete growth medium is prepared by aseptically combining,

1. 56 mL FBS (ATCC cat no. 30-2020) to a 500 mL bottle of basal medium – L-15 (ATCC cat no. 30-2008).
2. Mix gently, by swirling.

4. Thawing and Propagation of Cells

Reagents and Material:

- Complete growth medium (L-15 + 10 % (v/v) FBS)
- Water bath
- T-75 cm² polystyrene flask
- 15 mL polypropylene conical centrifuge tubes
- Plastic pipettes (1 mL, 10 mL, 25 mL)

a. Thawing cells

Method:

1. Place complete growth medium (L-15 + 10 % (v/v) FBS) in a water bath set at 35 °C to 37 °C.
2. Label T-75 flask to be used with the (a) name of cell line, (b) passage number, (c) date, (d) initials of technician.
3. Wearing a full face shield, retrieve a vial of frozen cells from the vapor phase of the liquid nitrogen freezer.
4. Thaw the vial by gentle agitation in a water bath set at 35 °C to 37 °C. To reduce the possibility of contamination, keep the O-ring and cap out of the water.

Note: Thawing should be rapid (approximately 2 min to 3 min, just long enough for most of the ice to melt).

5. Remove vial from the water bath, process immediately.
6. Remove excess water from the vial by wiping with sterile gauze saturated with 70 % ethanol.
7. Transfer the vial to a BSL-2 laminar-flow hood.

b. Propagating cells

Method:

1. Add 9 mL of complete growth medium (L-15 + 10 % (v/v) FBS) to a 15-mL conical centrifuge tube.
2. Again wipe the outer surface of the vial with sterile gauze wetted with 70 % ethanol.
3. Using sterile gauze, carefully remove the cap from the vial.
4. With a 1 mL pipette transfer slowly the completely thawed content of the vial (1 mL cell suspension) to the 15-mL conical centrifuge tube containing 9 mL complete growth medium (L-15 + 10 % (v/v) FBS). Gently resuspend cells by pipetting up and down.
5. Centrifuge at 125 xg, at room temperature, for 8 min to 10 min.
6. Carefully aspirate (discard) the medium, leaving the pellet undisturbed.
7. Using a 10 mL pipette, add 10 mL of complete growth medium (L-15 + 10 % (v/v) FBS).
8. Resuspend pellet by gentle pipetting up and down.
9. Using a 1 mL pipette, remove 1 mL of cell suspension for cell count and viability. Cell counts are performed using either an automated counter (such as Innovatis Cedex System; Beckman-Coulter ViCell system) or a hemocytometer.
10. Record total cell count and viability. When an automated system is used, attach copies of the printed results to the record.
11. Plate cells in pre-labeled T-75 cm² flask at about 2.5 x 10⁴cells/cm². Add 5 mL complete growth medium (L-15 + 10 % (v/v) FBS).
12. Transfer flask to a 37 °C ± 1°C incubator **without CO₂**.

NOTE: The L-15 medium formulation was devised for use in a free gas exchange with atmospheric air. A CO₂ and air mixture is detrimental to cells when using this medium for cultivation.

13. Observe culture daily to ensure culture is free of contamination, culture has not reached confluence, and medium has not evaporated.
14. If fluid renewal is needed, aseptically aspirate the complete growth medium from the flask and discard. Add an equivalent volume of fresh complete growth medium to the flask. Alternatively, perform a fluid addition by adding fresh complete growth medium (L-15 + 10 % (v/v) FBS) to the flask without removing the existing medium. Record fluid change or fluid addition on the Cell Line Expansion Table (see Table 5 in Appendix 6).
15. If subculturing of cells is needed, continue to 'Subculturing cells'.

Note: Subculture when cells are 80-90 % confluent (see photomicrographs, Figures 1 and 2 in Appendix 1).

c. Subculturing cells

Reagents and Material:

- 0.25 % (w/v) Trypsin-0.53 mM EDTA
- DPBS
- Complete growth medium (L-15 (ATCC cat no. 30-2008) + 10 % (v/v) FBS (ATCC cat no. 30-2020))
- Plastic pipettes (1 mL, 10 mL, 25 mL)
- T-75 cm², T-225 cm² polystyrene flasks

Method:

1. Aseptically remove medium from the flask
2. Add appropriate volumes of sterile Ca²⁺- and Mg²⁺-free DPBS to the side of the flask opposite the cells so as to avoid dislodging the cells (see Table 3).
3. Rinse the cells with DPBS (using a gently rocking motion) and discard.
4. Add appropriate volume of 0.25 % (w/v) Trypsin-0.53 mM EDTA solution to the flask (see Table 3).
5. Incubate the flask at 37 °C ± 1 °C until the cells round up. Observe cells under an inverted microscope every 5 min. When the flask is tilted, the attached cells should slide down the surface. This usually occurs after 5 min to 10 min of incubation.

Note: Do not leave trypsin-EDTA on the cells any longer than necessary as clumping may result.

6. Neutralize the trypsin-EDTA/cell suspension by adding an equal volume of complete growth medium (L-15 + 10 % (v/v) FBS) to each flask. Disperse the cells by pipetting, gently, over the surface of the monolayer. Pipette the cell suspension up and down with the tip of the pipette resting on the bottom corner or edge until a single cell suspension is obtained. Care should be taken to avoid the creation of foam.
7. Using a 1 mL pipette, remove 1 mL of cell suspension for total cell count and viability.
8. Record total cell count and viability.
9. Add appropriate volume of fresh complete growth medium (L-15 + 10 % (v/v) FBS) and transfer cell suspension (for volume see Table 1 on page 4) into new pre-labeled flasks at a seeding density of 4 x 10⁴ to 5 x 10⁴ cells/cm² or a split ratio of 1:4 to 1:5.
10. Label all flasks with the (a) name of cell line, (b) passage number, (c) date, (d) initials of technician.

Table 3: Volume of Rinse Buffer and Trypsin

Flask Type	Flask Size	DPBS Rinse Buffer	Trypsin-EDTA
T-flask	12.5 cm ² (T-12.5)	1 mL to 3 mL	1 mL to 2 mL
	25 cm ² (T-25)	1 mL to 5 mL	1 mL to 3 mL
	75 cm ² (T-75)	4 mL to 15 mL	2 mL to 8 mL
	150 cm ² (T-150)	8 mL to 30 mL	4 mL to 15 mL
	175 cm ² (T-175)	9 mL to 35 mL	5 mL to 20 mL
	225 cm ² (T-225)	10 mL to 45 mL	5 mL to 25 mL

5. Harvesting of Cells for Cryopreservation

Reagents and Material:

- 0.25 % (w/v) Trypsin-0.53 mM EDTA
- DPBS
- Complete growth medium (L-15 (ATCC cat no. 30-2008) + 10 % (v/v) FBS (ATCC cat no. 30-2020))
- 50 mL or 250 mL conical centrifuge tube
- Plastic pipettes (1 mL, 10 mL, 25 mL)
- Sterile DMSO
- 1 mL to 1.8 mL cryovials
- Ice bucket with ice

Method:

1. Label cryovials to include information on the (a) name of cell line, (b) passage number (c) date.
2. Prepare cryopreservation medium by adding DMSO to cold complete growth medium (L-15 + 10 % (v/v) FBS) at a final concentration of 5 % (v/v) DMSO. Place cryopreservation medium on ice until ready to use.
3. Aseptically remove medium from the flask
4. Add appropriate volumes of sterile Ca²⁺- and Mg²⁺-free DPBS to the side of the flask so as to avoid dislodging the cells (see Table 3).
5. Rinse the cells with DPBS (using a gently rocking motion) and discard.
6. Add appropriate volume of 0.25 % (w/v) Trypsin-0.53 mM EDTA solution to the flask (see Table 3).

7. Incubate the flask $37\text{ }^{\circ}\text{C} \pm 1\text{ }^{\circ}\text{C}$ until the cells round up. Observe cells under an inverted microscope every 5 min. When the flask is tilted, the attached cells should slide down the surface. This usually occurs after 5 min to 10 min of incubation.

Note: Do not leave trypsin-EDTA on the cells any longer than necessary as clumping may result.

8. Neutralize the trypsin-EDTA /cell suspension by adding an equal volume of complete growth medium (L-15 + 10 % (v/v) FBS) to each flask. Disperse the cells by pipetting, gently, over the surface of the monolayer. Pipette the cell suspension up and down with the tip of the pipette resting on the bottom corner or edge until a single cell suspension is obtained. Care should be taken to avoid the creation of foam.
9. Using a 1 mL pipette, remove 1 mL of cell suspension for total cell count and viability.
10. Record total cell count and viability.
11. Spin cells at approximately 125 xg for 5 min to 10 min at room temperature. Carefully aspirate and discard the medium, leaving the pellet undisturbed
12. Calculate volume of cryopreservation medium based on the count performed at step 9 and resuspend pellet in cold cryopreservation medium at a viable cell density of 2.0×10^6 cells/mL (acceptable range: 1.5×10^6 to 3×10^6) by gentle pipetting up and down.
13. Dispense 1 mL of cell suspension, using a 5 mL or 10 mL pipette, into each 1.0 mL cryovial.
14. Place filled cryovials at $2\text{ }^{\circ}\text{C}$ to $8\text{ }^{\circ}\text{C}$ until ready to cryopreserve. A minimum equilibration time of 10 min but no longer than 45 min is necessary to allow DMSO to penetrate the cells.

Note: DMSO is toxic to the cells. Long exposure in DMSO may affect viability.

6. Cryopreservation of Cells

Material:

- Liquid nitrogen freezer
- Cryomed Programmable freezer (Forma Scientific, catalog no. 1010) **or**
- Mr. Frosty (Nalgene, catalog no. 5100)
- Isopropanol
- Cryovial rack

a. Cryopreservation using a rate-controlled programmable freezer

Method:

A slow and reproducible cooling rate is very important to ensure good recovery of cultures. A decrease of 1 °C per min -80 °C followed by rapid freeze at about 15 °C to 30 °C per min drop to -150 °C will usually work for most animal cell cultures. The best way to control the cooling process is to use a programmable, rate-controlled, electronic freezer unit. Refer to the manufacturer's handbook for detailed procedure.

i. Using the Cryomed

Starting the Cryopreservation Process

1. Check that the liquid nitrogen valve that supplies the Cryomed is open.
2. Check the gauge to ensure that there is enough liquid nitrogen in the open tank to complete the freeze.
3. Install the thermocouple probe so that the tip is immersed midway into the control fluid

Note: Be sure that the thermocouple is centered in the vial and the vial is placed centered in the rack. The probe should be changed after three uses or if it turns yellow to ensure accurate readings by the controller during the freezing process. Old medium may have different freezing characteristics.

4. Close and latch Cryomed door.
5. Turn on microcomputer, computer and monitor.
6. Double click the "Cryomed" icon. The machine may need to be pre-programmed for specific cell type and medium.
7. From the top of the screen, select MENU → RUN FUNCTIONS → START RUN.
8. Fill out the box which appears on the screen. Cell line ID; TYPE OF SAMPLE; MEDIA; NUMBER OF SAMPLES.
9. Hit the ESCAPE key and the Cryomed will cool to 4°C.
10. Once Cryomed chamber has cooled to 4°C, load cryovials onto racks and close the door.
11. When the Cryomed's chamber temperature and the sample temperature have reached approximately 4°C; press the space bar to initiate the rate controlled cryopreservation process.

Completing the Cryopreservation Process

1. When samples have reached -80°C , an alarm will sound. To silence this, select ALARM from the options at the top of the screen.
2. Select MENU → RUN FUNCTIONS → STOP. Hit the ESCAPE key to return to the main menu and select EXIT.
3. Immediately transfer vials to liquid nitrogen freezer.
4. Shut down the microcomputer and then turn off the monitor.

b. Cryopreservation using “Mr. Frosty”

1. One day before freezing cells, add 250 mL isopropanol to the bottom of the container and place at 2°C to 8°C .
2. On the day of the freeze, prepare cells for cryopreservation as described above.
3. Insert cryovials with the cell suspension in appropriate slots in the container.
4. Transfer the container to a -70°C to -90°C freezer and store overnight.
5. Next day, transfer cryovials to the vapor phase of liquid nitrogen freezer.

Note: Each container has 18 slots which can accommodate 18 cryovials in one freeze.

Important information when using the rate-controlled programmable freezer or a manual method (Mr. Frosty) for cryopreservation of mammalian cells.

- Regardless which cooling method is used, it is important that the transfer to the final storage location (between -130°C and -196°C) be done quickly and efficiently. If the transfer cannot be done immediately, the vials can be placed on dry ice for a short time. This will avoid damage to cultures by inadvertent temporary warming during the transfer process. Warming during this transfer process is a major cause of variation in culture viability upon thawing.
- Always keep the storage temperature below -130°C for optimum survival. Cells may survive storage at higher temperatures but viability will usually decrease over time. The ideal storage container is a liquid nitrogen freezer where the cultures are stored in the vapor phase above the liquid nitrogen.

Note: ATCC does not have experience in the cryopreservation of the MDA-MB-231 cells by any other method than the Cryomed programmable freezer.

7. Storage

- Store cryopreserved cells in the vapor phase of liquid nitrogen freezer (below $-130\text{ }^{\circ}\text{C}$) for optimum long-term survival.

Note: Experiments on long-term storage of animal cell lines at different temperature levels indicate that a $-70\text{ }^{\circ}\text{C}$ storage temperature is not adequate except for very short period of time. A $-90\text{ }^{\circ}\text{C}$ storage may be adequate for longer periods depending upon the cell line preserved. The efficiency of recovery, however, is not as great as when the cells are stored in vapor phase of the liquid nitrogen freezer.

APPENDIX 1: PHOTOMICROGRAPHS OF NCI-PBCF-HTB26 (MDA-MB-231)

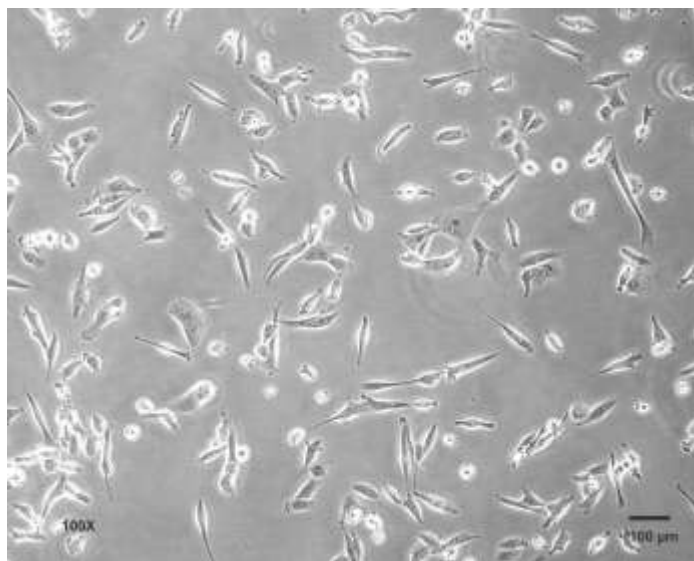


Figure 1: Photomicrograph of MDA-MB-231 cells after one day, post-freeze recovery. Cells were plated at 2.5×10^4 viable cells/cm².

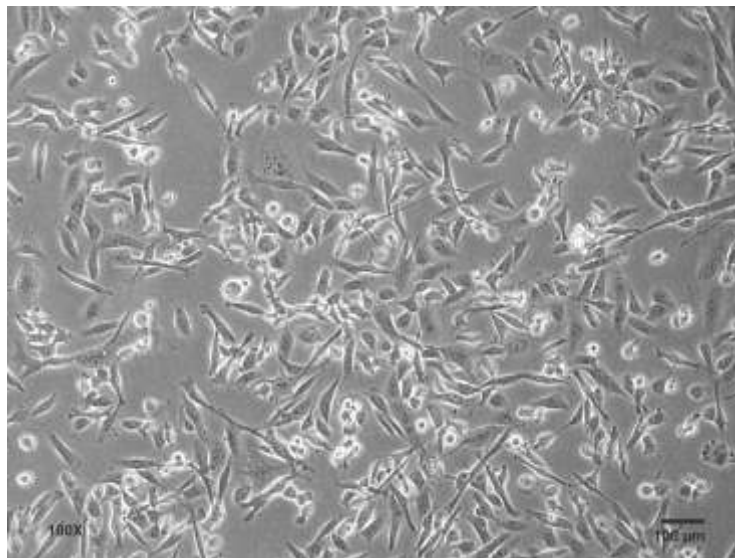


Figure 2: Photomicrograph of MDA-MB-231 cells after one day, post-freeze recovery. Cells were plated at 7.5×10^4 viable cells/cm².

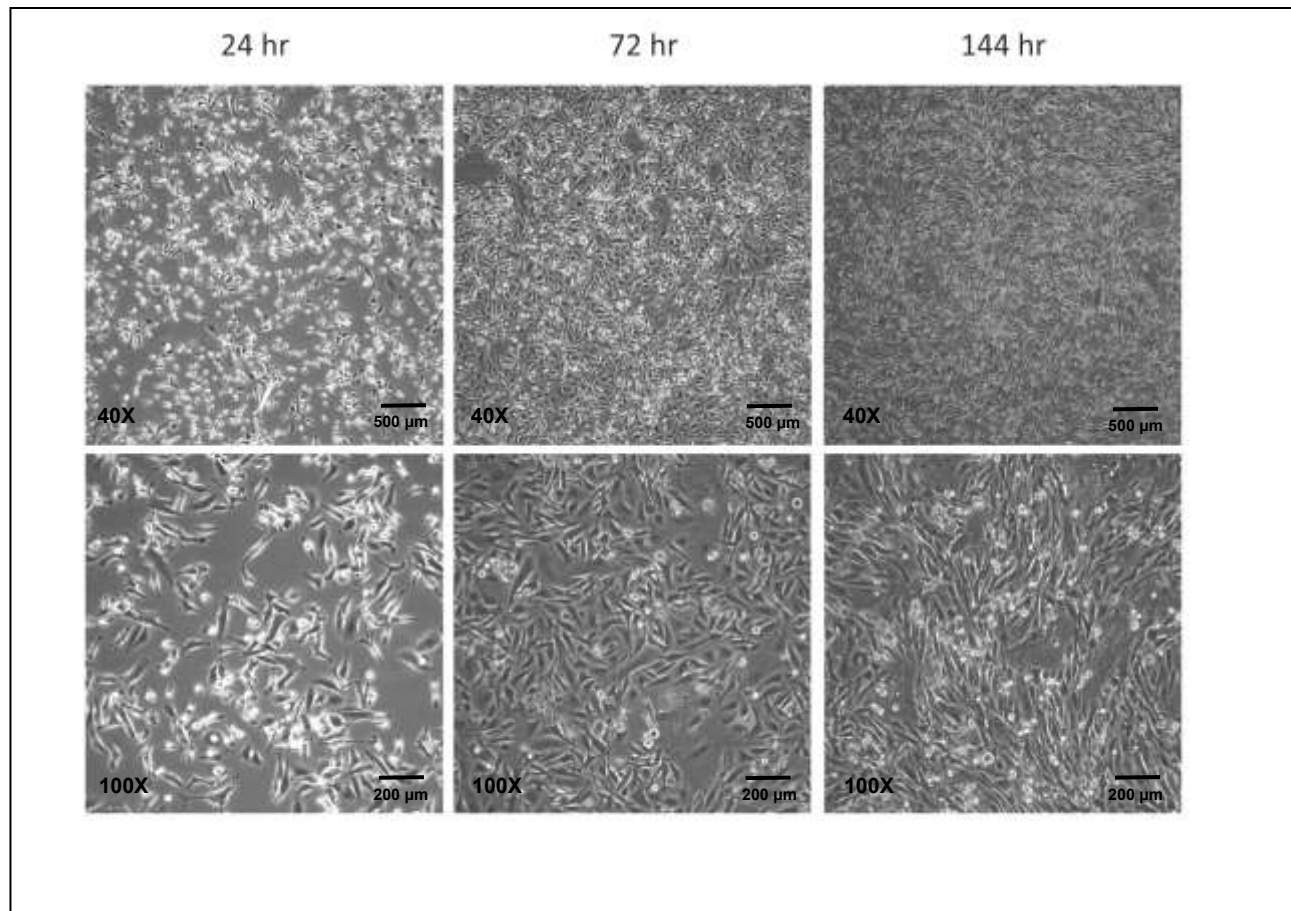


Figure 3: Photomicrograph of MDA-MB-231 cells at various time points after seeding at a cell density of 5×10^4 viable cells/cm².

APPENDIX 2: GROWTH PROFILE OF NCI-PBCF-HTB26 (MDA-MB-231)

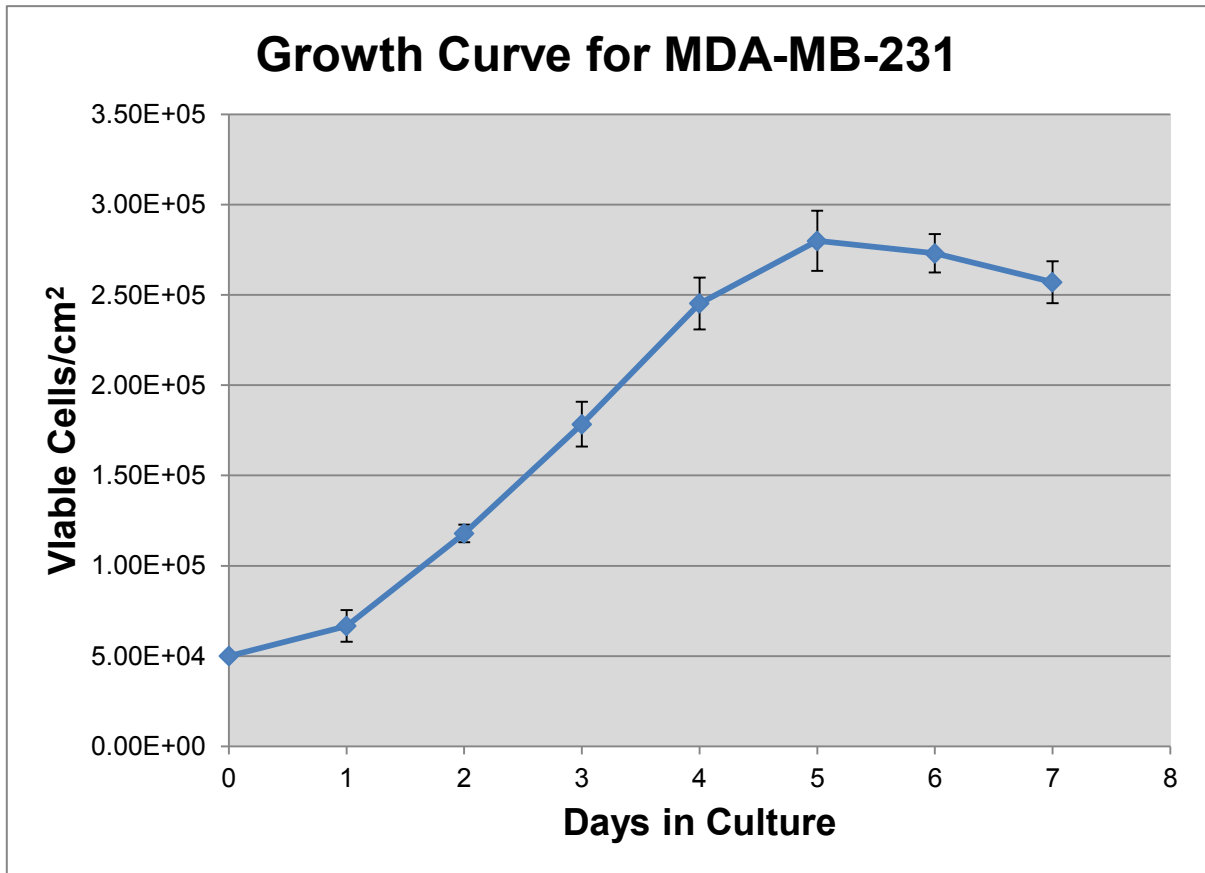
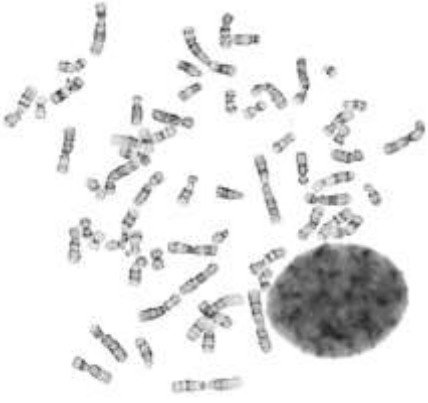
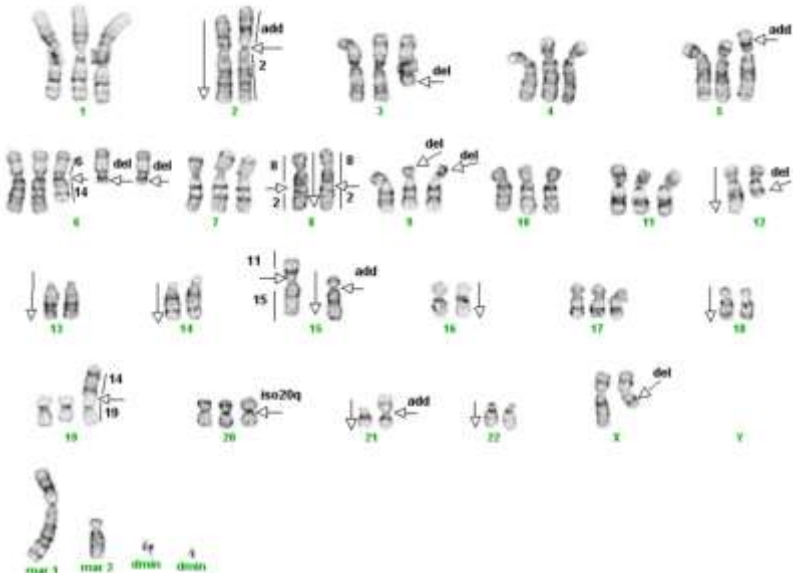


Figure 3: Growth curve for MDA-MB-231 cells; cells were plated at 5×10^4 viable cells/cm²; population doubling time (PDT) is approximately 38 h.

APPENDIX 3: CYTOGENETIC ANALYSIS OF NCI-PBCF-HTB26 (MDA-MB-231) CELLS

NCI-PBCF-HTB26 Karyotype Results	
 <p>Metaphase Spread</p>	 <p>Karyotype</p>
Number of metaphase spreads counted	20
Band level	300-400
Number of metaphase spreads karyotyped	10
Chromosome range	59-66
Sex	Female
Comments	Aneuploid*

Karyotype:

59-66,XX,-X,del(X)(q21.2),-2,add(2)(p10),del(3)(q21),add(5)(p15),+6,del(6)(q13)x2,der(6)t(6;14)(q12;q22),-8,der(8)t(2;8)(p13;q22)x2,del(9)(p22)x2,-12,del(12)(q15),-13,-14,add(14)(p10),-15,add((15)(p10),der(15)t(11;15)(q21;p11.2),-16,-18,der(19)t(14;19)(q11.2;p13.3),i(20)(q10),-21,add(21)(p10),dup(21)(q11.2q21.2),-22,+mar1,+mar2,~2-3dmin

(ISCN nomenclature written based on a triploid karyotype).

*Human diploid karyotype (2N): 46,XX (female) or 46,XY (male)

Karyotype Summary:

In the karyotype image, arrows indicate regions of abnormality. It should be noted that the karyotype description includes the observed abnormalities from all examined metaphase spreads, but due to heterogeneity, not all of the karyotyped cells will contain every abnormality. This is a highly rearranged human cell line of female origin containing 59 to 66 chromosomes per metaphase spread (hypotriploid). Structural abnormalities include rearrangements to over 60% of the 22 different autosomal chromosomes and to the X chromosome (sex chromosome). There are two unidentifiable clonal marker chromosomes (markers present in two or more of the examined cells) [+mar1 and +mar2] and two to three double minutes [~2-3dmin]. Double minutes are doublets of small acentric DNA fragments and are recorded in the karyotype when present in more than one of the examined metaphase spreads.

The rearrangements include:

- Addition of unknown material to the short arms (designated by p) of chromosomes 2, 5, 14, 15 and 21;
- Deletion of material from the short arm of chromosome 9;
- Deletion of material from the long arms (designated by q) of chromosomes X, 3, 6, and 12;
- Translocations involving chromosomes 6 and 14 [der(6)t(6;14)(q12;q22)], 8 and 2 [der(8)t(2;8)(p13;q22)], 15 and 11 [der(15)t(11;15)(q21;p11.2)] and 19 and 14 [der(19)t(14;19)(q11.2;p13.3)];
- Isochromosome 20 [i(20)(q10)];
- A duplication of material on the long arm of chromosome 21 between bands q11.2 and q21.2 [dup(21)(q11.2q21.2)].

Numerical changes are based on a triploid karyotype which would contain three copies of each chromosome (3N). Therefore, karyotype designations such as -2 and -8, indicates two copies of structurally normal chromosomes 2 and 8; +6 indicates four copies of chromosome 6. (*ISCN 2009: An International System for Human Cytogenetic Nomenclature (2009), Editors: Lisa G. Shaffer, Marilyn L. Slovak, Lynda J. Campbell*)

Karyotype Procedure:

- Cell Harvest:

Cells were allowed to grow to 80-90% confluency. Mitotic division was arrested by treating the cells with KaryoMax® colcemid for 20 minutes to 2 hours at 37°C. Cells were harvested using 0.05% Trypsin-EDTA, treated with 0.075M KCL hypotonic solution, and then fixed in three changes of a 3:1 ratio of methanol:glacial acetic acid.

- Slide Preparation:

Slides were prepared by dropping the cell suspension onto wet glass slides and allowing them to dry under controlled conditions.

- G-banding

Slides were baked one hour at 90°C, trypsinized using 10X trypsin-EDTA, and then stained with Leishman's stain.

- Microscopy

Slides were scanned using a 10X objective and metaphase spreads were analyzed using a 100X plan apochromat objective on an Olympus BX-41 microscope. Imaging and karyotyping were performed using Cytovision® software.

- Analysis

Twenty metaphase cells were counted and analyzed, and representative metaphase cells were karyotyped depending on the complexity of the study.

Summary of Karyotyping Procedure:

G-band karyotyping analysis is performed using GTL banding technique: **G** bands produced with **t**rypsin and **L**eishman. Slides prepared with metaphase spreads are treated with trypsin and stained with Leishman's. This method produces a series of light and dark bands that allow for the positive identification of each chromosome.

MDA-MB-231 karyotyping was carried out by Cell Line Genetics, Inc. (Madison, WI 53719)

APPENDIX 4: GLOSSARY OF TERMS

Confluent monolayer: adherent cell culture in which all cells are in contact with other cells all around their periphery and no available substrate is left uncovered.

Split ratio: the divisor of the dilution ration of a cell culture to subculture (e.g., one flask divided into four, or 100 mL up to 400 mL, would be split ratio of 1:4).

Subculture (or passage): the transfer or transplantation of cells, with or without dilution, from one culture vessel to another.

Passage No: the total number of times the cells in the culture have been subcultured or passaged (with each subculture the passage number increases by 1).

Population doubling level (PDL): the total number of population doublings of a cell line since its initiation in vitro (with each subculture the population doubling increases in relationship to the split ratio at which the cells are plated). See Appendix 7.

Population doubling time (doubling time): the time interval, calculated during the logarithmic phase of growth in which cells double in number.

Seeding density: recommended number of cells per cm² of substrate when inoculating a new flask.

Epithelial-like: adherent cells of a polygonal shape with clear, sharp boundaries between them.

Fibroblast-like: adherent cells of a spindle or stellate shape.

APPENDIX 5: REFERENCE

1. Culture Of Animal Cells: A Manual of Basic Technique by R. Ian Freshney, 6th edition, published by Wiley-Liss, N.Y., 2010.
2. Brinkley BR, et al. Variations in cell form and cytoskeleton in human breast carcinoma cells in vitro. *Cancer Res.* 40: 3118-3129, 1980. PubMed: 7000337
3. Cruciger Q, et al. Morphological, biochemical and chromosomal characterization of breast tumor lines from pleural effusions. *In Vitro* 12: 331, 1976.
4. Siciliano MJ, et al. Mutually exclusive genetic signatures of human breast tumor cell lines with a common chromosomal marker. *Cancer Res.* 39: 919-922, 1979. PubMed: 427779
5. Cailleau R, et al. Breast tumor cell lines from pleural effusions. *J. Natl. Cancer Inst.* 53: 661-674, 1974. PubMed: 4412247
6. Cailleau R, et al. Long-term human breast carcinoma cell lines of metastatic origin: preliminary characterization. *In Vitro* 14: 911-915, 1978. PubMed: 730202
7. Bates SE, et al. Expression of the transforming growth factor-alpha/epidermal growth factor receptor pathway in normal human breast epithelial cells. *Endocrinology* 126: 596-607, 1990. PubMed: 2294006
8. Dickstein B, et al. Increased epidermal growth factor receptor in an estrogen-responsive, adriamycin-resistant MCF-7 cell line. *J. Cell. Physiol.* 157: 110-118, 1993. PubMed: 8408230
9. Huguet EL, et al. Differential expression of human Wnt genes 2, 3, 4, and 7B in human breast cell lines and normal and disease states of human breast tissue. *Cancer Res.* 54: 2615-2621, 1994. PubMed: 8168088
10. Satya-Prakash KL, et al. Cytogenetic analysis on eight human breast tumor cell lines: high frequencies of 1q, 11q and HeLa-like marker chromosomes. *Cancer Genet. Cytogenet.* 3: 61-73, 1981. PubMed: 7272986
11. Katayose Y, et al. Promoting apoptosis: a novel activity associated with the Cyclin-dependent kinase inhibitor p27. *Cancer Res.* 57: 5441-5445, 1997. PubMed: 9407946
12. Littlewood-Evans AJ, et al. The osteoclast-associated protease cathepsin K is expressed in human breast carcinoma. *Cancer Res.* 57: 5386-5390, 1997. PubMed: 9393764
13. Sheng S, et al. Maspin acts at the cell membrane to inhibit invasion and motility of mammary and prostatic cancer cells. *Proc. Natl. Acad. Sci. USA* 93: 11669-11674, 1996. PubMed: 8876194

14. De Vincenzo R, et al. Antiproliferative activity of colchicine analogues on MDR-positive and MDR-negative human cancer cell lines. *Anticancer Drug Des.* 13: 19-33, 1998. PubMed: 9474240
15. Soker S, et al. Characterization of novel vascular endothelial growth factor (VEGF) receptors on tumor cells that bind VEGF165 via its exon 7-encoded domain. *J. Biol. Chem.* 271: 5761-5767, 1996. PubMed: 8621443

APPENDIX 7: CALCULATION OF POPULATION DOUBLING LEVEL (PDL)

Calculate the PDL of the current passage using the following equation:

$$\text{PDL} = X + 3.322 (\log Y - \log I)$$

Where: X = initial PDL
I = cell inoculum (number of cells plated in the flask)
Y = final cell yield (number of cells at the end of the growth period)

APPENDIX 8: SAFETY PRECAUTIONS

- Use at least approved Biological Safety Level 2 (BSL-2) facilities and procedures.
- Wear appropriate Personal Protective Equipment (PPE), such as isolation gown, lab coat with sleeve protectors, face shield and gloves.
- Use safety precautions for working with liquid nitrogen, nitrogen vapor, and cryogenically cooled fixtures apply.
- Use liquid nitrogen freezers and liquid nitrogen tanks only in areas with adequate ventilation. Liquid nitrogen reduces the concentration of oxygen and can cause suffocation.
- Wear latex gloves over insulating gloves to prevent liquid nitrogen from soaking in and being held next to the skin. Liquid nitrogen is extremely cold and will cause burns and frostbite. Metal inventory racks, tank components, and liquid nitrogen transfer hoses exposed to liquid nitrogen or nitrogen vapor quickly cool to cryogenic temperatures and can cause burns and frostbite.
- Wear a full face mask when thawing and retrieving vials from liquid nitrogen freezer. Danger to the technician derives mainly from the possibility that liquid nitrogen can penetrate the cryovial during storage. On warming, rapid evaporation of the nitrogen within the confines of such cryovial can cause an aerosol or explosion of the cryovial and contents.